

CollabCAD

**A Collaborative CAD/CAM Software
Registered at U.S. Patent & Trade Mark Office**

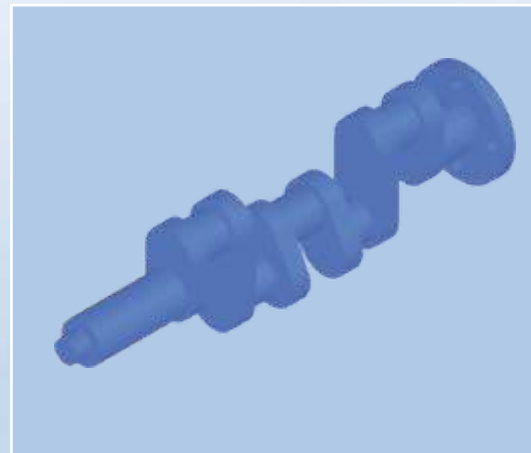


CollabCAD is a Java based distributed 3D CAD/CAM Software System, which provides a total solution from Product Design, Numerical Control, Visualization, Simulation, Analysis to Content Management, Workflow and Office Automation. Plot Configurator, the 2D drafting module of CollabCAD, has the state-of-the-art facilities for generation of fabrication drawings.

CollabCAD runs on Linux and Windows and is available in both Stand Alone & Client-Server mode. The collaborative nature of CollabCAD enables multiple designers to work across a network and concurrently access the same design for viewing and modification.

Advantages

- Economical CAD Solutions
- Collaborative & Comprehensive
- Parametric & Feature Based Modeling
- Flexible & Easy to Use Database Connectivity
- Programmable Scripting Interface
- Powerful Reverse Engineering
- Slicing/Cross Sectioning
- Reflection Line Analysis
- Customizable User Interface
- Standard Data Exchange Formats
- BAR Code for ERP Solution
- Plot Configurator and BOM
- Visualization Module for VRML 3D worlds
- XML based Geometry Data Storage
- Content Management System & Work Flow
- Customizable ERP/ MRP/ SCM Module
- Interface to Finite Element Analysis



Collaborative Design

- Facilitates Rapid Product Visualization
- Drastically cuts down the time for
 - Requirement Specification
 - Modeling
 - Review and Analysis
- Dynamic Sharing of Designs across the Network
- Interactive Design environment enables multiple designers to work across a Network
- Concurrently access the same Design for Viewing and Modification
- Audio and Video Conferencing enables On-Line communication between participating Designers



Design & Drafting

- Build and Edit entities in Virtual 3D Space
- 2D Profile and free hand Sketching
- Plot Configurator
 - Generation of 2D Drawings
 - Dimensioning and Detailing

Surface Modeling

- Creation and Modification of Surface Entities
- Trimming and Lofting of Surfaces
- Surface Diagnostics
- Reflection Line Analysis for visual inspection using Zebra Stripes Mapping
- Reverse Engineering: Generate complex Surfaces and Curves from a set of Points obtained from Raw/Scanned Data

Solid Modeling

- Primitive Solids
- Slab, Revolution Solid, Sweep Solid
- Boolean operations, Mass and Section property calculations, Sectioning, Slicing
- Feature Based Part Modeling

Assembly

- Constraint based Parametric Profile Editing
- 3D Constraint Solver

3D Tolerance Analysis for Assembly and Manufacture Module

- Measured Points
- Linear & Angular Tolerance Dimensions
- Tolerance Analysis on created Loops
- Tolerance Synthesis

Visualization

- 3D Stereoscopic Viewing
- Browsing of 3D Worlds and Objects

Data Exchange

- CAD Data Exchange using International Standards
- Import - IGES/STEP/STL
- Export - IGES/STEP/VRML/STL

Database Link

- Creation of Standard Tables and Databases
- Attach Properties from DB tables to Geometric Entities
- Bar Code to Link the Designs to Non CAD utilities

Standard Parts Library

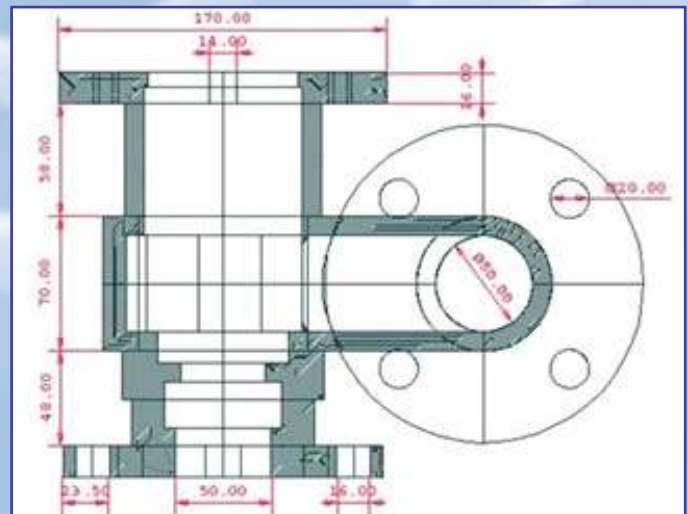
- Component Library Framework
- Create and Store Standard Parts/Components
- Sharing of Library

Basic NC Operations

- Lathe - Roughing, Contouring, Drilling, Threading
- 3-Axis Surface Milling
- Point -to -Point Milling
- Supports ISO Standard Tool library

Customization

- Facilitates 3D CAD Modeling using Scripting
- XML based Tool Palette for User Customization



Product Lifecycle Management (PLM)

- Reduces the Efforts and Time required for obtaining the Data
- Minimizes Confusions and Repetition of Work
- Data related to a Component/Product maintained at a single accessible location
- Integrated Content Repository
- Archive/Retrieve the Designs and Engineering Documents
- Incorporates Security, Locking and Versioning of the Engineering Drawings and Documents
- Interface to a Workflow System
- Specify, Execute, Monitor Workflow
- Coordinate the Organizations flow of Work

FEA Module

- Supports Interoperability between CAD Modeling and Computation Software
- Interfaced with Salome (Pre & Post Processor)
- Meshing, Modifying and Analyzing Geometrical Structures
- Interfaced with Code-Aster (Finite Element Solver)
- Full range of Multiphysics Analysis and Modeling methods well beyond Thermo-Mechanical Calculations
- Applicable for Linear as well as Non-Linear Structures

Enterprise Resource Planning (ERP)

- No Additional Cost for Generic ERP
- Customizable as per Organization Requirements
- Reduces Operational Costs
- Improves Operational Efficiency
- Enhances Productivity
- More Flexibility
- Better Control of Processes
- Improves Communication
- Aids Collaboration
- Interface to MRP/CRM/SCM/e-Commerce Applications

System Requirement

RAM	1 GB (Minimum)
Free Disk Space	1 GB (Basic) 2 GB (Advanced)
Virtual Memory	800 MB to 1 GB
Graphics Card	Open GL Supported Hardware Accelerated Graphics Adapter
System	Intel and AMD Based Systems
Operating System	Windows and Linux



Distributors (Marketing, Support, Training)

ELOGIC Technologies Pvt Ltd #1, 2nd Floor, 100 Ft Ring Road, Kathriguppe Banashankari III Stage Bangalore - 560 085	Mr. T.D. Prakash Managing Director Tel: +91 80 4121 0892, Fax: +91 80 4121 0893 e-mail: contact@ellogic.co.in web: http://www.ellogic.co.in/en_new/engineering/collab_cad.html
Innovent Engineering Solutions Pvt Ltd No 5, 1st Floor, 1st Cross, 10th 'A' Main Indira Nagar 2nd Stage Bangalore- 560 338	Mr. R. Radhakrishnan Assistant Manager (Marketing) Tel: +91 80 2520 5015/16/17 e-mail: krish.r@innoventengg.com
Mindpower Engineering Solutions Pvt Ltd 10-A, RKR Nagar, Poompuhar Nagar Main Road, Kolathur Chennai - 600 099	Mr. R. Krishnamoorthy Director - Business Development Tel: +91 95661 22266 email: krish@mindpowerengg.com
DHI (India) Water & Environment Pvt Ltd IIIrd Floor, NSIC - STP Complex NSIC Bhawan, Okhla Industrial Estate New Delhi - 110 020	Mr. Ajay Pradhan Regional Business Development Director (APAC) Tel: +91 11 4053 7472, Mobile: +91 98101 55246 e-mail: ajp@dhigroup.com
Kaladhari Infosys CP-10, Awas Vikas Near O.B.C Bank, Nainital Highway Rudrapur, U.S.Nagar Uttarakhand - 263 153	Mr. Paramjeet Singh Chief Technology Officer Mobile: +91 97617 95652, Fax : +91 59442 45739 e-mail: cto@kaladhari.info , web: www.kaladhari.info
Vayam Technologies Limited Thapar House 124 Janapath New Delhi - 110 001	Mr. Adesh Kumar Tyagi General Manager - MSP Tel: +91 11 4710 1337, Mobile: +91 88005 77708 e-mail: adesht@vayamtech.com
Zeus Numerix Private Limited IIT Bombay Campus Powai Mumbai - 400 076	Prof. G.R. Shevare Director(Technology) & CEO Tel: +91 22 2576 4131 / 7112 email: zeusnumerix@aero.iitb.ac.in , shevare@aero.iitb.ac.in

For Further Details Contact :

Computer Aided Design Group

National Informatics Centre

A-Block, C.G.O. Complex, Lodhi Road, New Delhi - 110 003

Tel: 91-11-2436 6261/2430 5159 Fax : 91-11-2439 2225

E-mail : collabcad@nic.in

Web: <http://www.collabcad.gov.in>

